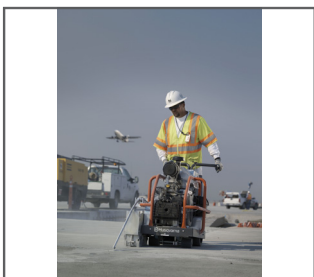




## Husqvarna Soff-Cut 4000

*The Husqvarna Soff-Cut 4000 self-propelled gasoline saw is designed for heavy-duty commercial, industrial and paving applications. Features include a 20 hp twin-cylinder engine with overhead valves, heavy-duty air cleaner, electric start, full pressure lubrication, hydraulic valve lifters and a mechanical fuel pump. Three blade widths can be used, allowing different joint widths and crack control simultaneously.*



### **SOFF-CUT™ TECHNOLOGY**

Husqvarna Soff-Cut is a unique patented system for early entry concrete sawing. This technology enables concrete to be cut within the first one or two hours of finishing and before final set. Husqvarna Soff-Cut™ provides the best solution for minimizing the risk of random cracking, and it simplifies the working process, compared to conventional sawing.

## Features Husqvarna Soff-Cut 4000

- Self-propelled gasoline saw with hydrostatic transmission.
- Electronic key start.
- Electric blade depth control.
- Mechanical remote retractable guide.
- Patented dry-cut diamond blade, anti-ravel skid plate and arbor.
- Patented low-noise and low-dust blade block enclosure.

TECHNICAL SPECIFICATION	
Motor manufacturer	Kohler
Motor spec	Kohler gasoline
Max output (As rated by the engine manufacturer)	15.3 kW / 20.5 hp
Cylinders	2
Number of strokes	4-stroke engine
Cylinder displacement	41.1 cu. inch
Cylinder bore	3.1 inch
Cylinder stroke	2.6 inch
Fuel tank volume	4.34 gal.
Starter	Electric
Engine cooling	Air
Number of belts	3
Displacement, l	0.674 lit
Oil capacity, l	1.9 lit
Diamond blade, max	13.5"
Max cutting depth	2.75 inch
Blade depth control	Electric
Blade control	Electric Remote
Blade shaft diameter	1.5 inch
Blade flange	5.875"
Blade shaft RPM	3500 rpm
Axle front	1 inch
Rear axle diameter	1 inch
Handle bars	Fixed
Primary wheel size	Outside diameter: 4 Wheel width: 4 Inner bore: 0"
Secondary wheel size	Outside diameter: 10 Wheel width: 3.625 Inner bore: 0"
Weight	420 lbs
Weight incl. packaging	518 lbs
Product size, LxWxH	34x29x34 inch

