



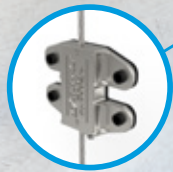
The Trapeze Range

Suspension solutions for mechanical, electrical and HVAC services

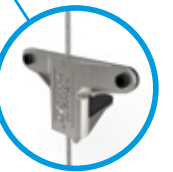


- Saves time
- Easy and efficient installation
- Versatile configurations

Butterfly
Trapeze
Page 8



Duct Trapeze
Page 7



Trapeze Plus
Page 5



Cable Basket
Adaptor
Page 10



Trapeze
Page 4



The Gripple® Trapeze range has been developed for suspending a variety of services. The range is specifically designed to save you time, labor and money.

The Trapeze range of products are perfectly suited for the suspension of pipework, cable containment, ducting, air-conditioning units and many other applications, where fast, safe and efficient suspensions are required.

The Trapeze range is the perfect innovative and efficient replacement for traditional suspension methods such as threaded rod, being lighter and quicker without compromising on strength. Designed to suit a range of applications to provide you with a sleek, professional finish for your project.

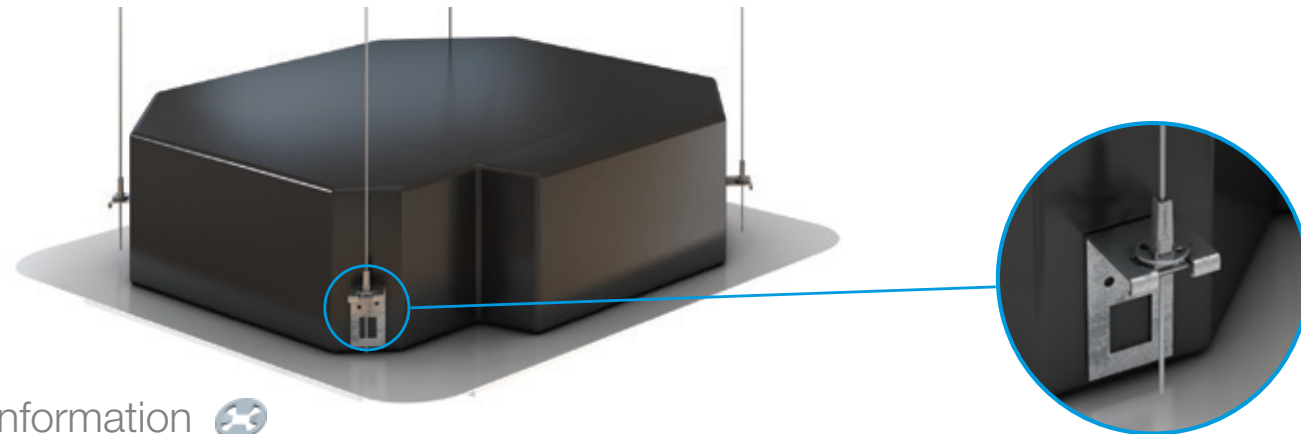
Trapeze (TZ)



Ideal for single and multi-tiered suspension of mechanical, electrical and HVAC services

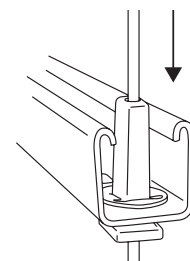
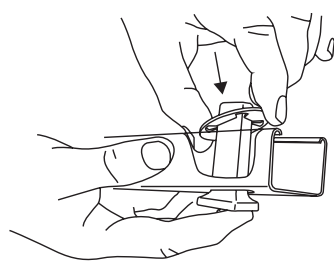
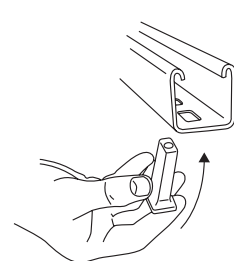
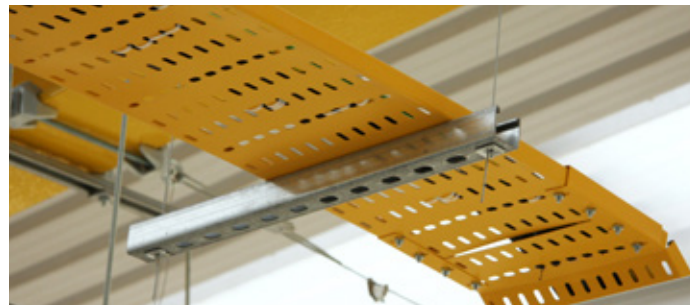
* UL 2239 - Hardware for the Support of Conduit, Tubing, and Cable. Report reference E251132.

- Ideal for fast suspension of cable containment, pipework, air conditioning cassettes and chilled beams
- Tapered design; accommodates all slot sizes in strut or brackets
- Discreet; fits completely inside the channel
- Pre-fits onto channel to ease working at height
- Release pin allows for height and leveling adjustment
- Aesthetic design
- Available as an accessory for multi-tiered installations
- Supplied as a ready-to-use kit with a wide range of end fixings
- Sizes available; No.2 (100 lbs per hanger) and No.3 (200 lbs per hanger); 5:1 safety factor
- Also available in black (See page 9)



Clip information

This clip pre-fits and holds the Trapeze onto the channel. In preparation for working at height, simply clip onto the Trapeze unit.



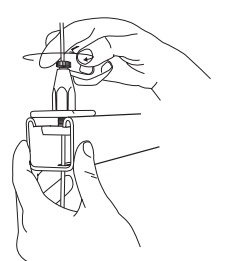
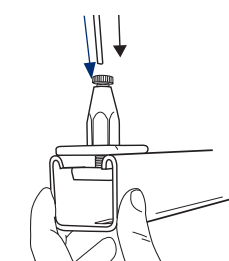
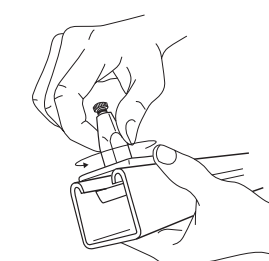
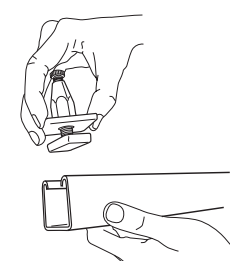
Trapeze Plus (MTZ)



The all-steel Trapeze Plus is packed with features to make the suspension of building services even more secure and durable

* UL 2239 - Hardware for the Support of Conduit, Tubing, and Cable. Report reference E251132

- Reduced time working at height; pre-install into channel using the hex nut provided, or with optional strut nut & washer
- Tool free setting
- Easy-to-use integral release button to allow height and leveling adjustment
- Tighten the nut on top for ultimate security
- Can use to hang multi-tiered strut to optimize space
- Supplied as a ready-to-use cable hanger kit with a wide range of end fixing options
- Sizes available: No.2 (100 lb), No.3 (200 lb), and No.4 (495 lb); 3:1 safety factor

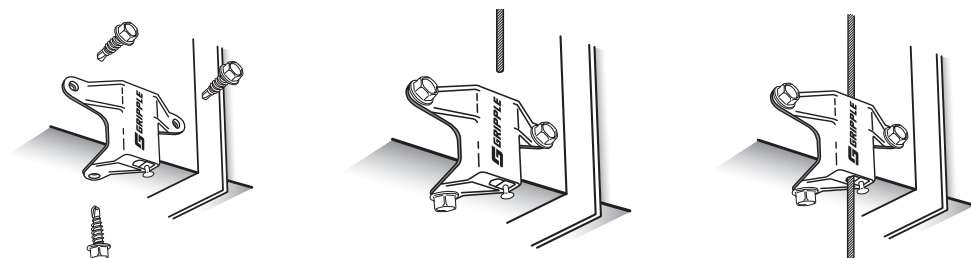
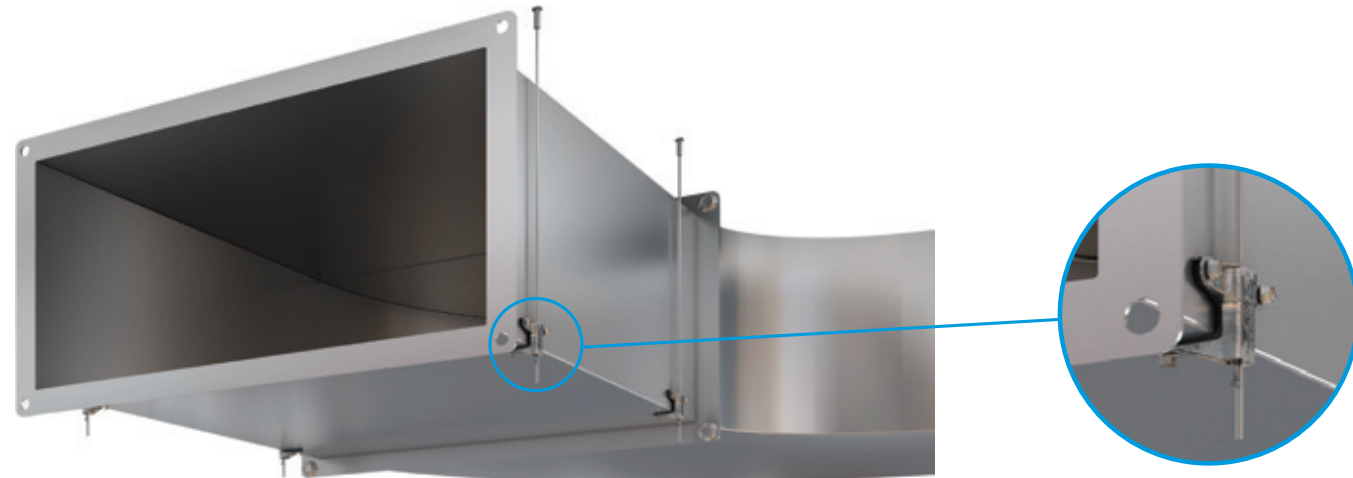


Duct Trapeze (DT)



Ideal for fast suspension of rectangular ducting and equipment

- Eliminates the need for a strut support
- Suitable for ducting made from 0.6 – 1.5 mm gauge steel
- Spreads the load across 3 fixing points, for self-drilling screws or pop rivets (not provided)
- Rubber pad prevents air leakage and dampens vibration
- Conforms to DW144 class C
- Release pin allows for rapid height and leveling adjustment
- Load rated at 100 lbs with a 5:1 safety factor
- Supplied as a ready-to-use cable hanger kit with a wide range of end fixing options
- Also available in black (see page 9)

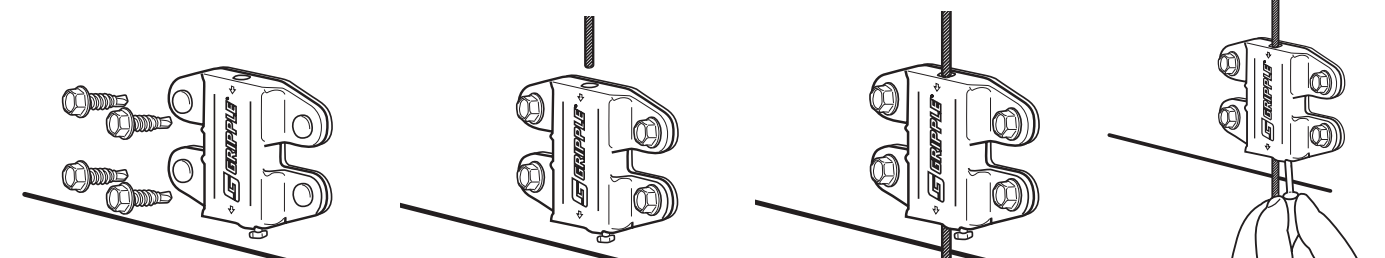
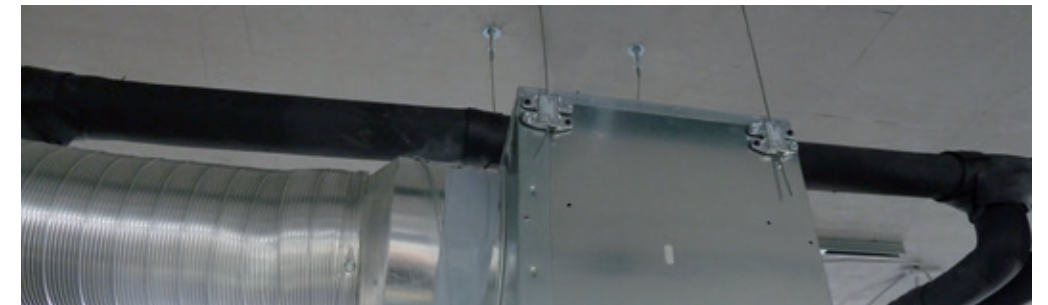
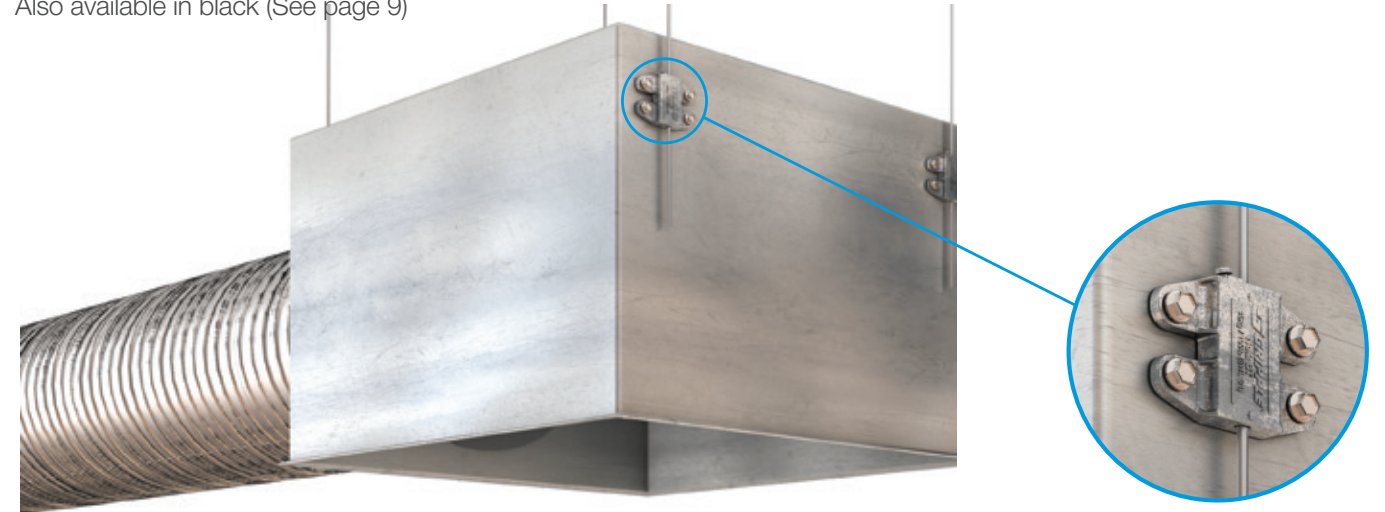


Butterfly Trapeze (BT)



Designed to improve the installation of plenum boxes and ductwork

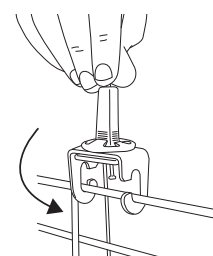
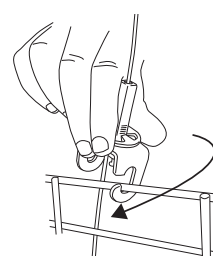
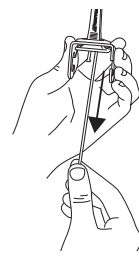
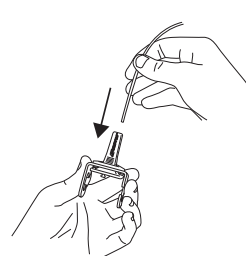
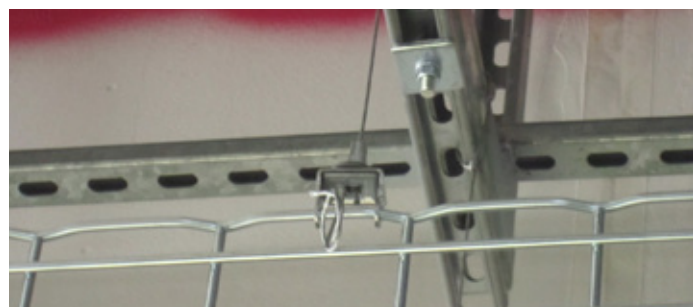
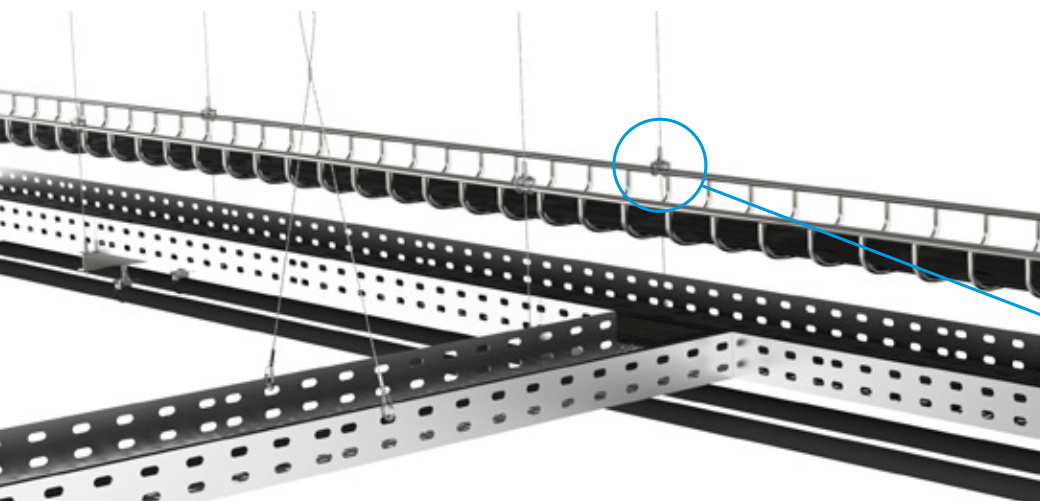
- Ideal for applications where space is tight – e.g. plenum boxes or rectangular duct where access from below is required
- Eliminates the need for a strut support
- Release pin allows for rapid height and leveling adjustment
- Spreads the load across 4 fixing points
- Rubber pad prevents air leakage and dampens vibration
- Conforms to DW144 Class C
- Load rated at 100 lbs with a 5:1 safety factor
- Can be used for multi-tiered installations
- Supplied as a ready-to-use cable hanger kit with a wide range of end fixing options
- Also available in black (See page 9)



Cable Basket Adaptor (CB6)

Ideal for suspending cable baskets with wire diameter up to 1/4" (6mm)

- Designed for use with Trapze No.2 cable hanger to suspend cable baskets
- Safe Working Load 100 lbs per hanger with a 5:1 safety factor
- Ideal for quick and easy installation of multi-tiered cable baskets
- Available as an add-on to a ready-to-use No.2 Trapeze hanger kit with a range of cable end fixing options
- Attachment to top rail of cable or basket tray should be per cable/basket tray manufacturer's approval
- Also available in black (see page 9)



Accessories

Individual Trapeze products are also available separately as an accessory to allow multi-tiered installations from one suspended cable hanger

Trapeze No. 2 & 3

Combine Trapeze as an accessory with any Trapeze kit for multi-tiered installations. Load ratings of 100 lbs or 200 lbs with a 5:1 safety factor.

Product code:
TRAPEZE-NO2
TRAPEZE-NO3



Trapeze Plus No. 2, 3 & 4

Combine Trapeze Plus as an accessory with any Trapeze kit for multi-tiered installations. Load ratings of 100 lbs, 200 lbs, or 495 lbs with a 3:1 safety factor.

Product code:
MTZ2-10BB-INC
MTZ3-10BB-INC
MTZ4-10BB-INC



Butterfly Trapeze

Ideal for use with light ductwork. Combine Butterfly Trapeze as an accessory with any Trapeze kit for multi-tiered installations. Maximum load rating of 100 lbs with a 5:1 safety factor.

Product code:
BT2-10BB



Duct Trapeze

Ideal for use with rectangular ductwork. Combine Duct Trapeze as an accessory with any Trapeze kit for multi-tiered installations. Maximum load rating of 100 lbs with a 5:1 safety factor.

Product code:
DT2-ACC



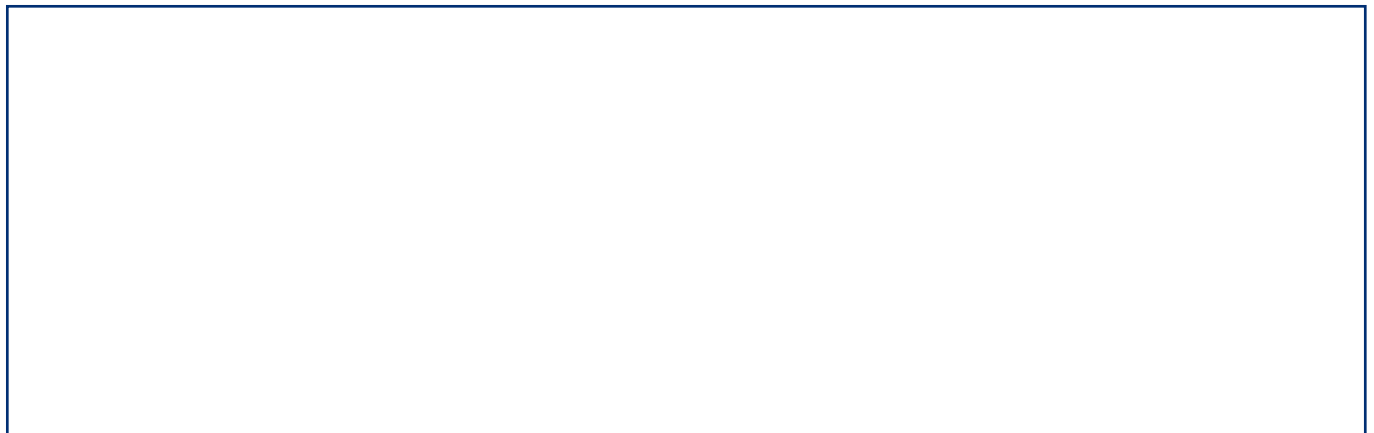
Black Line - Trapeze Range

Gripple's ready-to-use suspension kits now come with the option of a black finish to further enhance the aesthetic appeal of the range

The slim and unobtrusive aesthetics of Gripple's wire suspension system are now even more perfectly suited to the design of many modern buildings where building services in the roof space are left exposed and visible. Lead time required.



www.gripple.com
info@gripple.com



Gripple Inc

1611 Emily Lane
Aurora
IL 60502
USA

T | +1 866 474 7753
F | +1 800 654 0689
E | usinfo@gripple.com

Gripple Ltd (Headquarters)

The Old West Gun Works
Savile Street East
Sheffield S4 7UQ
UK

T | +44 (0) 800 018 4264
F | +44 (0) 114 275 1155
E | info@gripple.com

Gripple Europe SARL

1, rue du commerce
BP 37
67211 Obernai Cedex
France

T | +33 (0)3 88 95 44 95
F | +33 (0)3 88 95 08 78
E | frinfo@gripple.com

Gripple India

B 95/2
Naraina Industrial Area
Phase I
New Delhi-110028

T | +91 11-40582703
F | +91 11-40582703
E | ininfo@gripple.com