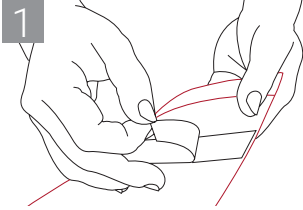
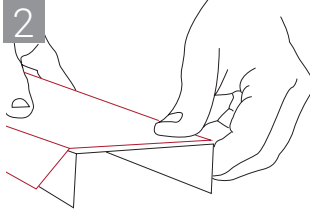
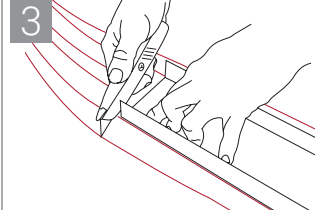


SpeedFlex® Track Top Gasket
(Part No. TTG350F, TTG600F)

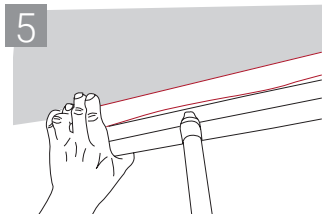
1 Pull end of TTG from center of roll. Peel optional adhesive from end.



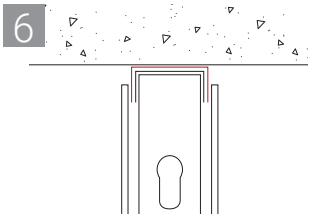
2 Place TTG at one end of track and center along its entire length.



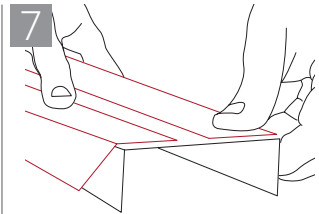
3 Flip track and cut TTG along other end of track.



5 Secure track to floor/ceiling as described in reference wall design.



6 Verify that downward projecting flaps are sandwiched between gypsum board and steel ceiling track. Seams in adjoining lengths of gasket may be butted or overlapped.



7 The TTG350F can be cut along the center perforation to be placed on wider tracks.

