



MARATHON ROOFING PRODUCTS, INC  
 3310 N BENZING ROAD  
 ORCHARD PARK, NY 14127-1538  
 TOLL FREE: 1-800-828-8424  
 PHONE: (716) 332-7673  
 FAX: (716) 332-7676  
 www.marathondrains.com

SELECT DESIRED SIZE:

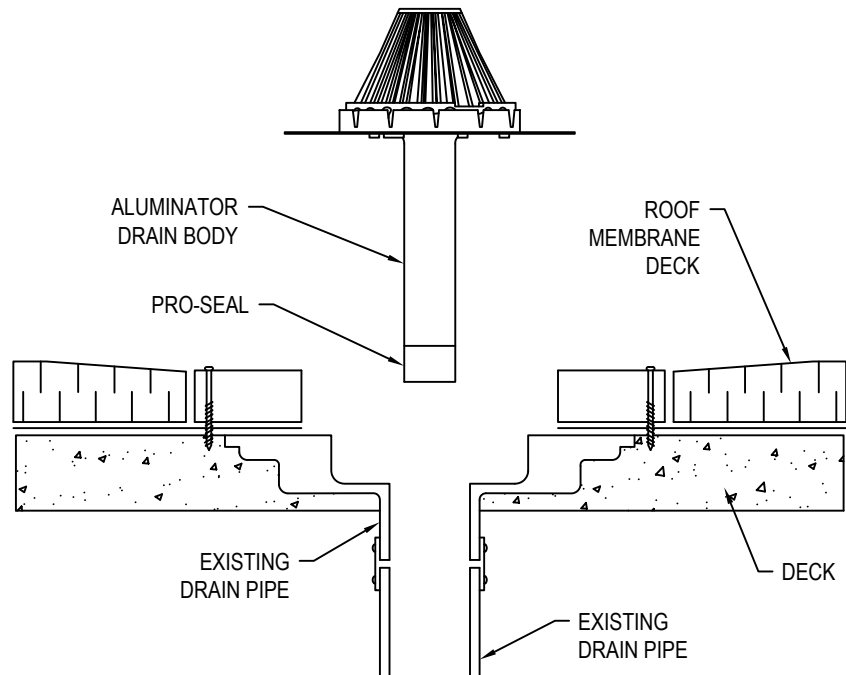
- ☐ 3" (76 MM)  
☐ 4" (102 MM)  
☐ 5" (127 MM)  
☐ 6" (152 MM)  
☐ 8" (203 MM)

SELECT DESIRED FLANGE COAT:

- ☐ PVC  
☐ TPO

SELECT DESIRED ACCESSORIES:

- ☐ 2" ALUMINUM COMBINATION  
 CLAMPING RING/ OVERFLOW DAM  
☐ 2" AND 4" ALUMINUM OVERFLOW  
 INSERT  
☐ 2 3/4" ALUMINUM LOW PROFILE  
 STRAINER



DETAIL

SEAL EXPANSION CAPACITIES FOR ALUMINATOR & PROSEAL DRAINS				
DRAIN SIZE	STARTING OD OF SEAL/ OUTLET	FITS INTO PIPE ID	MAXIMUM EXPANSION DIAMETER OF SEAL	ID OF SEAL
3"	2.85"	2 7/8" - 3 1/4"	3.40"	2.19"
4"	3.80"	3 7/8" - 4 1/4"	4.40"	3.12"
5"	4.80"	4 7/8" - 5 1/4"	5.40"	4.15"
6"	5.70"	5 7/8" - 6 1/4"	6.40"	5"

#### SPECIFICATIONS:

**MATERIAL:** ALUMINUM

**TYPE:** RETROFIT

**BODY:** HEAVY GAUGE SPUN ALUMINUM

**FLANGE DIAMETER:** 16"

**DRAIN OUTLET LENGTH:** 12"

**CLAMPING RING:** 10" ALUMINUM

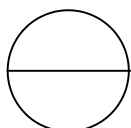
**STRAINER:** 10" ALUMINUM

#### NOTES:

1. INSTALLATION TO BE COMPLETED IN ACCORDANCE WITH MANUFACTURER'S SPECIFICATIONS.
2. DO NOT SCALE DRAWING.
3. THIS DRAWING IS INTENDED FOR USE BY ARCHITECTS, ENGINEERS, CONTRACTORS, CONSULTANTS AND DESIGN PROFESSIONALS FOR PLANNING PURPOSES ONLY. THIS DRAWING MAY NOT BE USED FOR CONSTRUCTION.
4. ALL INFORMATION CONTAINED HEREIN WAS CURRENT AT THE TIME OF DEVELOPMENT BUT MUST BE REVIEWED AND APPROVED BY THE PRODUCT MANUFACTURER TO BE CONSIDERED ACCURATE.
5. CONTRACTOR'S NOTE: FOR PRODUCT AND COMPANY INFORMATION VISIT [www.CADdetails.com/info](http://www.CADdetails.com/info) AND ENTER REFERENCE NUMBER 5355-001.

FLOW CAPACITY	
SIZE	GPM
3"	45
4"	85
5"	180
6"	210

ABOVE DRAINS WERE ABLE TO PERFORM AT THE PEAK RATES  
 WITH A HEAD OF WATER OF 3 1/4" OR LESS



ROOF DRAINS

ALUMINATOR